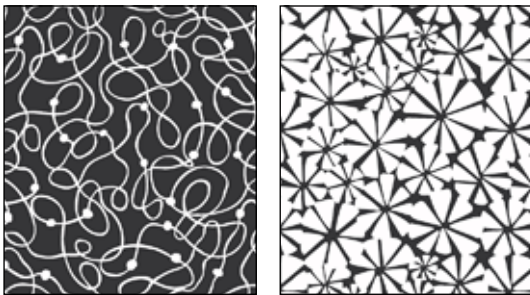
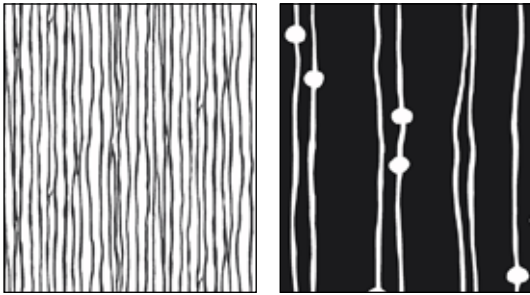


# B & W

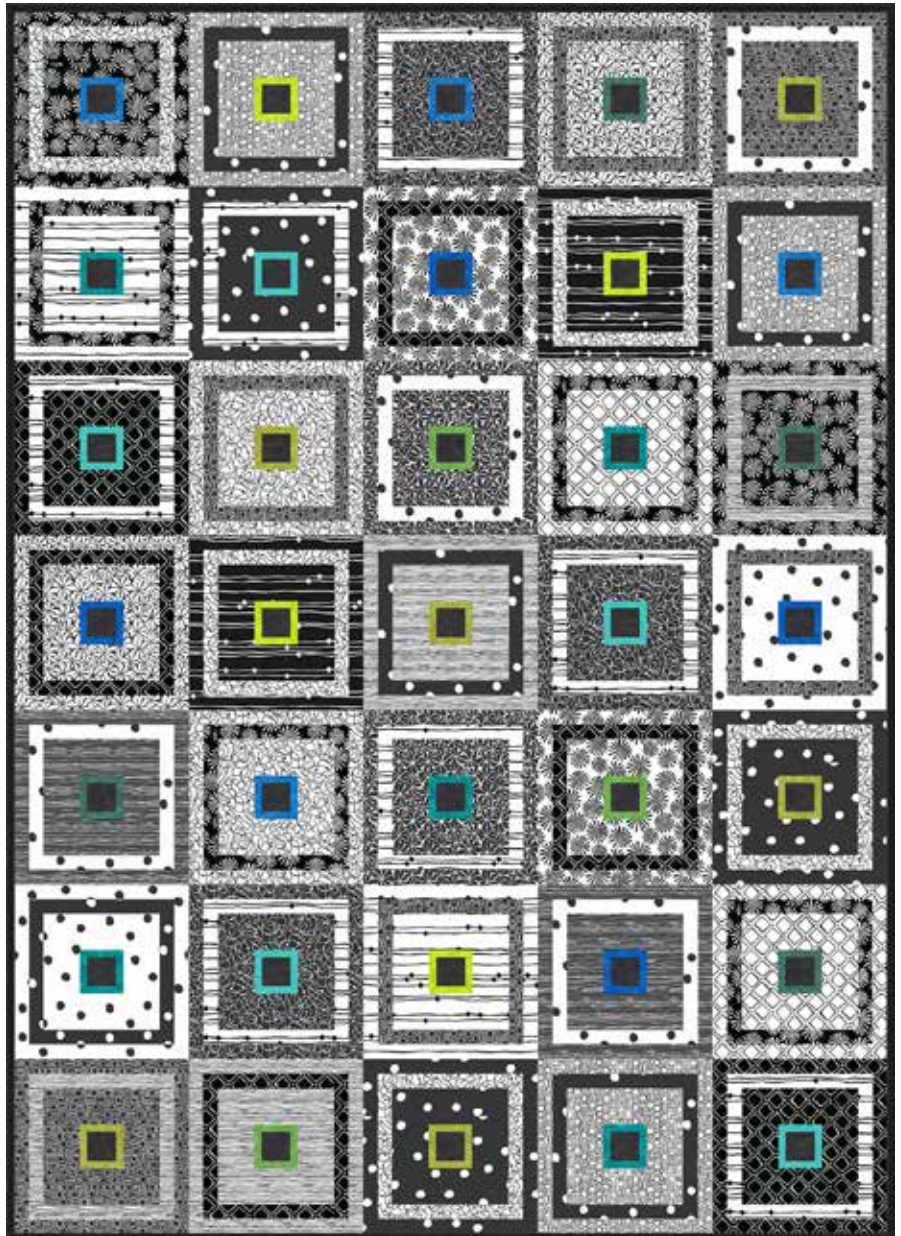
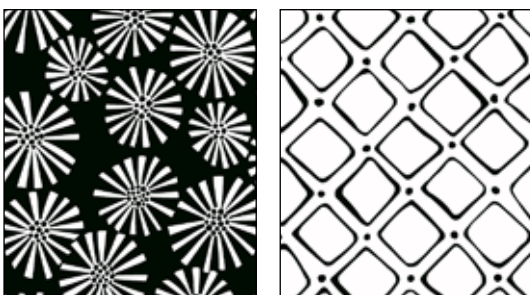
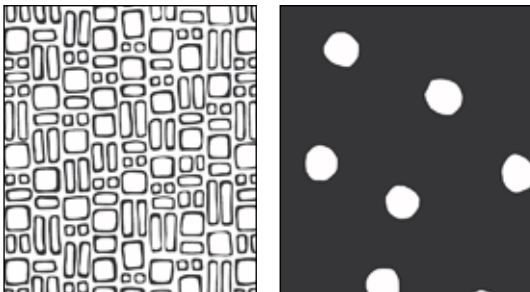
BY KIM SCHAEFER



Quilt designed by: **Kim Schaefer**

Quilt Size: **60" x 84"**

[andoverfabrics.com](http://andoverfabrics.com)



## About B & W

Black and white is a classic combination with timeless appeal. I hope these contemporary prints will be a source of creativity and inspiration for some beautiful quilts for family and friends to enjoy. — *Kim Schaefer*

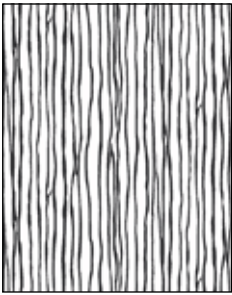
andover

•  
•  
•  
•  
•  
makower uk  
*The Henley Studio*

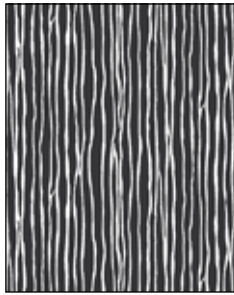
Free Pattern Download Available

1384 Broadway New York, NY 10018  
Tel. (800) 223-5678 • [andoverfabrics.com](http://andoverfabrics.com)

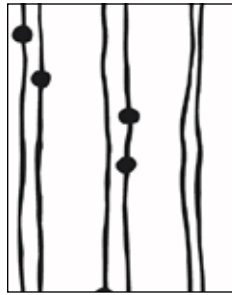




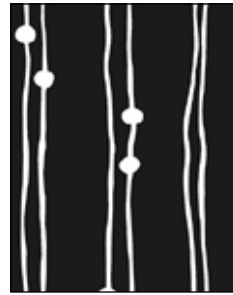
8060-AK 3/8 yd



8060-K 3/8 yd



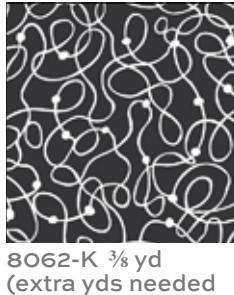
8061-AK 3/4 yd



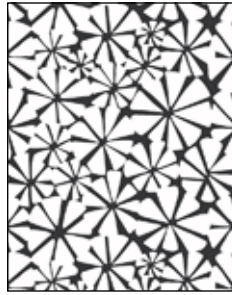
8061-K 3/8 yd



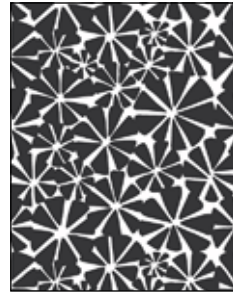
8062-AK 5/8 yd



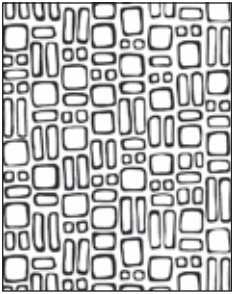
8062-K 3/8 yd  
(extra yds needed for backing)



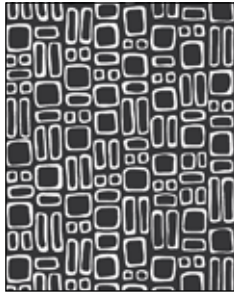
8063-AK 3/8 yd



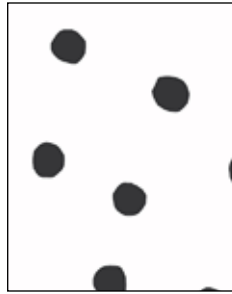
8063-K 3/8 yd



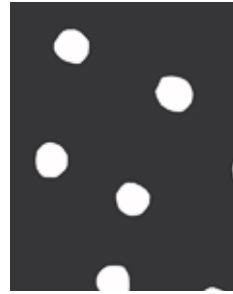
8064-AK 3/8 yd



8064-K 1/2 yd



8065-AK 1/2 yd



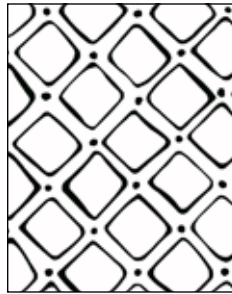
8065-K 5/8 yd



8066-AK 3/8 yd



8066-K 1/2 yd



8067-AK 3/8 yd



8067-K 3/4 yd

FABRIC	5 KITS	10 KITS	20 KITS
3135-K	1	1	2

FROM EACH	1	1	1
8060-AK	8060-K	8061-AK	8061-K
8062-AK	*8062-K	8063-AK	8063-K
8064-AK	8064-K	8065-AK	8065-K
8066-AK	8066-K	8067-AK	8067-K
3135-B2	3135-B3	3135-G2	3135-G3
3135-LG	3135-LT	3135-T3	3135-T5

**BACKING**

*8062-K	2	4	8
---------	---	---	---

Yardage needed for backing:  
5 1/4 YDS per kit

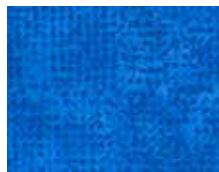
**Bolts needed to cut project kits.**  
15 yds = 1 bolt

Fabrics shown are 30% of actual size.  
All fabrics are used in quilt pattern.

Blend with fabrics from  
**Tic Tac**  
by Kim Schaefer



3135-B2 Fat 1/8 yd



3135-B3 Fat 1/8 yd



3135-G2 Fat 1/8 yd



3135-G3 Fat 1/8 yd



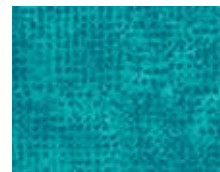
3135-K 1 yd  
(includes binding)



3135-LG Fat 1/8 yd



3135-LT Fat 1/8 yd



3135-T3 Fat 1/8 yd



3135-T5 Fat 1/8 yd

**B & W**  
BY KIM SCHAEFER

andover

makower uk  
*The Hanley Studio*